

**£250,000**

**Westbourne House,**

Hounslow, TW5 0SL



## PROPERTY SUMMARY

A well presented and spacious two-bedroom flat offering stunning, wide-set views in a peaceful residential location. This eight floor apartment combines comfort and space throughout, featuring two generously sized bedrooms, a modern and well-appointed bathroom, a separate fully fitted kitchen, and a bright, expansive living room that opens onto a private balcony with breath taking views.

The building benefits from lift access directly to the flat's entrance, and there is ample on-street parking and a private garage available just outside the block. Conveniently located within close proximity to Osterley Station, this property provides excellent transport links while maintaining a quiet and desirable setting.

Available with no onward chain.

Tenure. Lease: 935 years remaining (Sold with Share of Freehold)

Service Charge: £5,000 - exact amount to be confirmed

Ground Rent: NIL.

2



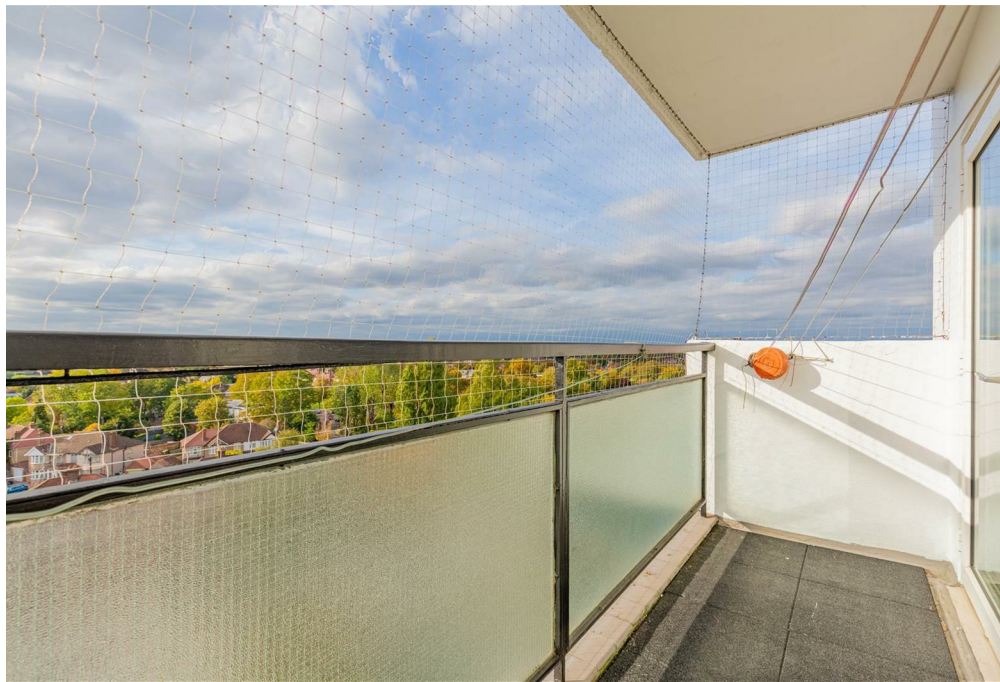
1



1

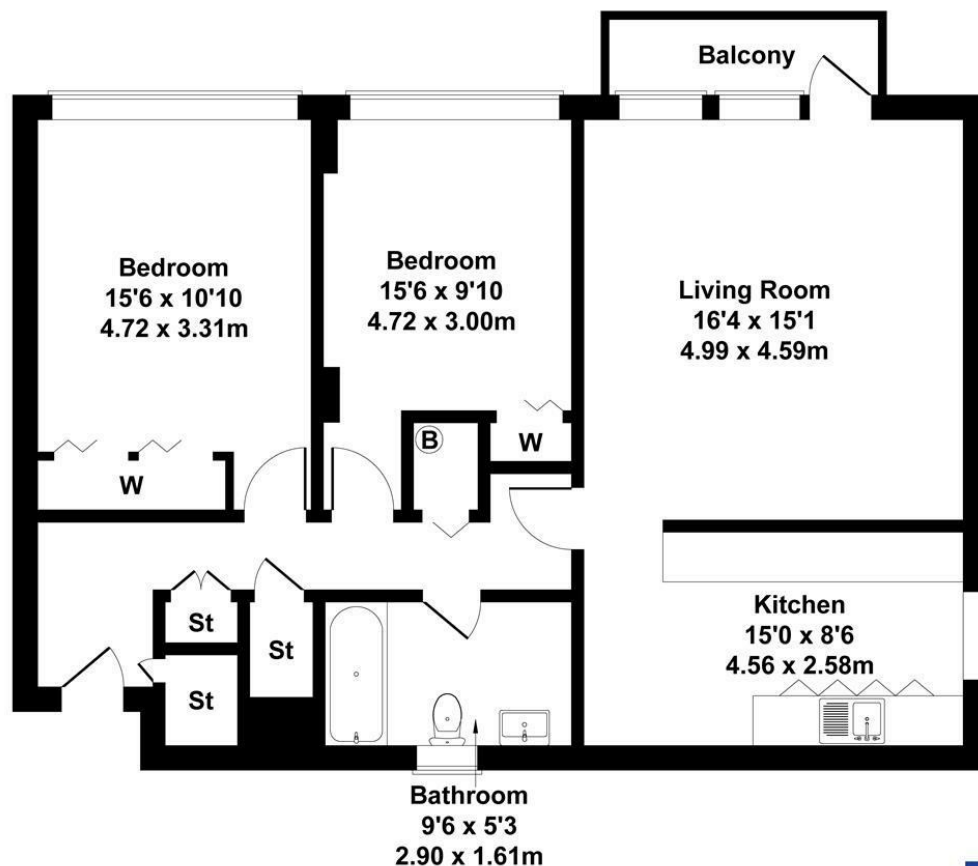






# Westbourne House, Wheatlands, Heston

Approximate Gross Internal Area  
904 sq ft - 84 sq m



Not to Scale. Produced by The Plan Portal 2025  
**For Illustrative Purposes Only.**

**Shaw  
& Co**

## LOCAL AUTHORITY

Hounslow

## TENURE

Leasehold - Share of Freehold

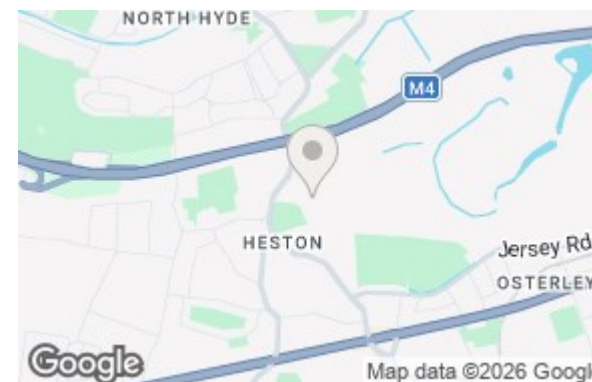
## COUNCIL TAX BAND

D

## VIEWINGS

By prior appointment only

Energy Efficiency Rating		
	Current	Potential
Very energy efficient - lower running costs		
(92 plus) <b>A</b>		
(81-91) <b>B</b>		
(69-80) <b>C</b>		
(55-68) <b>D</b>	76	79
(39-54) <b>E</b>		
(21-38) <b>F</b>		
(1-20) <b>G</b>		
Not energy efficient - higher running costs		
England & Wales EU Directive 2002/91/EC		



Agents Note: Whilst every care has been taken to prepare these particulars, they are for guidance purposes only. All measurements are approximate and are for general guidance purposes only and whilst every care has been taken to ensure their accuracy, they should not be relied upon and potential buyers/tenants are advised to recheck the measurements

**Shaw  
& Co**  
ESTATE  
AGENTS

**OFFICE ADDRESS**  
10 Central Parade  
New Heston Road  
Heston  
Middlesex  
TW5 0LJ

**OFFICE DETAILS**  
0208 570 7258  
heston@shawandcoestates.com